

20
23



ENCLOSURE SYSTEMS

We Protect Electronics

PRODUCT CATALOG

Welcome to ANUPAM group, where we specialize in manufacturing high-quality Enclosures and related products.



CALL US NOW!

+918369202063

About Us

We, at ANUPAM, are a young and dynamic business enterprise that visions to create a benchmark in the market as soon as possible. Our company's head office from where the business work is operated is based in one of the busiest cities Mumbai, Maharashtra (India). These products are developed by the dynamic engineers of our organization, who incorporate only modern technologies and optimum grade components in the manufacturing process. In a small time span we have managed to gain the trust of our patrons by serving not only quality products but by always standing up to their expectations. Further, with the help of our high-tech infrastructure, dynamic workforce and quality stringent policies, we have become the foremost choice of our customers



Visit Us

www.anupamgroups.com



Product & Service Offered



ENCLOSURES

Wide range of High quality, durable, Weatherproof, Waterproof, durable, ABS, Polycarbonate, Aluminium Enclosures



CUSTOMIZATION

Customise your Enclosure which fits your design for Cable Glands, Led Displays, Fans, Buttons etc



ACCESSORIES

All types of Cable Glands, Cable connectors, Switches, Hinges, Locks Din rails etc....



BRANDING

You can have custom logos or labels printed directly on the surface. There is a huge variety of pantone colors available for the customer to choose from or match an existing piece of graphic artwork



CALL US NOW!

+91 8369202063

IP 65/66 ABS & Polycarbonate Enclosures

"We offer premium quality ABS Enclosures (Junction Boxes) that is manufactured from quality raw materials to ensure its durability and utility. These are quality tested on well defined parameters before being delivered to our clients. We also meet customized requirement and offer our range at industry leading prices. ANUPAM has created a wide range of sizes to suite all needs.

Applications:

Our enclosures are suited for all areas requiring weatherproof enclosures Indoors Outdoors
Some area where these enclosures are ideally used are:Petrochemical Complex, CNC Machines, Instrumentation, Push Button Stations, Relay Modules, Control Panels, Electrical and Electronic Systems., Automation... the list is endless."

Protection Spec:	IP65 acc DIN EN 60529/ DIN 40050
Material:	ABS / Polycarbonate (UV Resistance) Rubber Seal: Foamed Neoprene Seal
Colour:	Light Grey RAL 7035) (Special colours on request)
Installation Temperature:	-5° C to +80° C (ABS) and +100° C (Polycarbonate) Temperature Resistance Max. 100° C 60695 10-2

Sr.No.	Item Code	Dimensions
1	BE-553	50 x 52 x 35 mm
2	BE-563	50 x 65 x 35 mm
3	BE-805635	80 x 56 x 35mm
4	BE-805655	80 x 56 x 55 mm
5	BE-808240	80 x 82 x 40 mm
6	BE-808245	80 x 82 x 45 mm
7	BE-808250	80 x 82 x 50 mm
8	BE-885	80 x 82 x 55 mm
9	BE-808280	80 x 82 x 80 mm
10	BE-888	80 x 82 x 85 mm
11	BE-501035	50 x 100 x 35 mm
12	BE-501060	50 x 100 x 60 mm
13	BE-801235	80 x 120 x 35 mm
14	BE-815	80 x 120 x 55 mm
15	BE-818	80 x 120 x 85 mm
16	BE-901365	90 x 130 x 65 mm
17	BE-80165	80 x 160 x 55 mm
18	BE-801670	80 x 160 x 70 mm
19	BE-801685	80 x 160 x 85 mm
20	BE-801610	80 x 160 x 100 mm
21	BE-801855	80 x 180 x 55 mm
22	BE-801870	80 x 180 x 70 mm
23	BE-801885	80 x 180 x 85 mm
24	BE-801810	80 x 180 x 100 mm
25	BE-80215	80 x 210 x 55 mm
26	BE-802360	80 x 230 x 60 mm
27	BE-802375	80 x 230 x 75 mm
28	BE-802385	80 x 230 x 85 mm
29	BE-802310	80 x 230 x 100 mm
30	BE-101040	100 x 100 x 40 mm
31	BE-101060	100 x 100 x 60 mm
32	BE-101080	100 x 100 x 80 mm
33	BE-101010	100 x 100 x 100 mm
34	BE-117	122 x 125 x 75 mm
35	BE-101550	100 x 150 x 50 mm



IP 65/66 ABS & Polycarbonate Enclosures

"We offer premium quality ABS Enclosures (Junction Boxes) that is manufactured from quality raw materials to ensure its durability and utility. These are quality tested on well defined parameters before being delivered to our clients. We also meet customized requirement and offer our range at industry leading prices. ANUPAM has created a wide range of sizes to suite all needs.

Protection Spec:	IP65 acc DIN EN 60529/ DIN 40050
Material:	ABS / Polycarbonate (UV Resistance) Rubber Seal: Foamed Neoprene Seal
Colour:	Light Grey RAL 7035) (Special colours on request)
Installation Temperature:	-5° C to +80° C (ABS) and +100° C (Polycarbonate) Temperature Resistance Max. 100° C 60695 10-2

Sr.No.	Item Code	Dimensions
36	BE-101570	100 x 150 x 70 mm
37	BE-121455	120 x 140 x 55 mm
38	BE-121470	120 x 140 x 70mm
39	BE-121410	120 x 140 x 100 mm
40	BE-127	120 x 200 x 75 mm
41	BE-129	120 x 200 x 90 mm
42	BE-121750	125 x 170 x 50 mm
43	BE-121765	125 x 170 x 65 mm
44	BE-121785	125 x 170 x 85 mm
45	BE-121710	125 x 175 x 100 mm
46	BE-151575	150 x 150 x 75 mm
47	BE-151510	150 x 150 x 100 mm
48	BE-181860	180 x 180 x 60 mm
49	BE-181875	180 x 180 x 75 mm
50	BE-181810	180 x 180 x 100 mm
51	BE-181811	180 x 180 x 115 mm
52	BE-212160	210 x 210 x 60 mm
53	BE-212175	210 x 210 x 75 mm
54	BE-212185	210 x 210 x 85 mm
55	BE-212110	210 x 210 x 100 mm
56	BE-142260	140 x 225 x 60 mm
57	BE-142275	140 x 225 x 75 mm
58	BE-142290	140 x 225 x 90 mm
59	BE-142210	140 x 225 x 105 mm
60	BE-1259	160 x 250 x 90 mm
61	BE-12515	160 x 250 x 115 mm
62	BE-192813	190 x 280 x 130 mm
63	BE-253085	250 x 300 x 85 mm
64	BE-253011	250 x 300 x 110 mm
65	BE-253015	250 x 300 x 150 mm
66	BE-253017	250 x 300 x 170 mm
67	BE-282813	280 x 280 x 130 mm
68	BE-304014	300 x 400 x 140 mm
69	BE-304018	300 x 400 x 180 mm
70	BE-304021	300x 400 x 210 mm
71	BE-453821	450 x 380 x 215 mm
72	BE-606025	600 x 600 x 225mm
73	BE-121255	122 x 125 x 55 mm
74	BE-122055	120 x 200 x 55 mm
75	BE-212190	210 x 210 x 90 mm
76	BE-162560	160 x 250 x 60 mm



IP66/67/68 Aluminium Enclosures

We are a renowned name engaged in providing a wide range of Aluminium Enclosures (Junction Box) that is manufactured from quality tested raw material. Known for its excellent quality, durability, dimension accuracy. These are widely used in Electric & Electronics Industries.

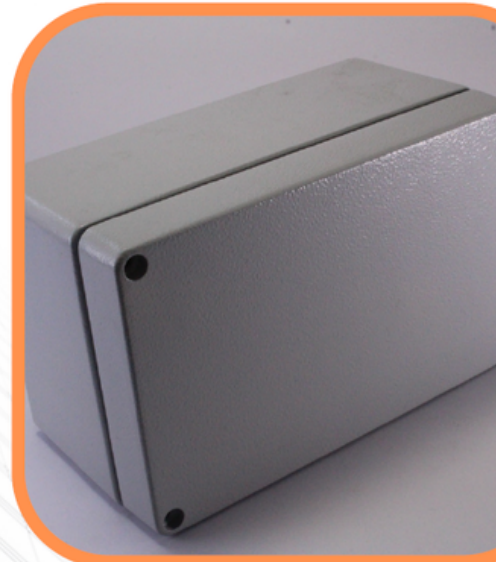
Applications:

Our enclosures are suited for all areas requiring weatherproof enclosures Indoors Outdoors Some area where these enclosures are ideally used are:Petrochemical Complex, CNC Machines, Instrumentation, Push Button Stations, Relay Modules, Control Panels, Electrical and Electronic Systems., Automation... the list is endless."

Technical Specifications:

Protection Spec:	IP66 acc DIN EN 6052/DIN 40050
Material:	Aluminium (Al Si 12) Rubber Seal: Foamed Neoprene Seal/ Silicon gasket
Colour:	Light Grey RAL 7035) (Special colours on request)
Installation Temperature:	-5° C to +80° C (ABS) and +100° C (Polycarbonate) Temperature Resistance Max. 100° C 60695 10-2

Sr.No.	Item Code	Dimensions
1	BE-45503 AL	45 x 50 x 30 mm
2	BE-58643 AL	58 x 64 x 34 mm
3	BE-64983 AL	64 x 98 x 34 mm
4	BE-75805 AL	75 x 80 x 57 mm
5	BE-64153 AL	64 x 150 x 34 mm
6	BE-80125 AL	80 x 125 x 57 mm
7	BE-118 AL	100 x 160 x 80 mm
8	BE-10108 AL	100 x 100 x 81 mm
9	BE-80175 AL	80 x 175 x 57 mm
10	BE-80255 AL	80 x 250 x 54 mm
11	BE-12128 AL	120 x 122 x 81 mm
12	BE-12129 AL	120 x 122 x 91 mm
13	BE-12228 AL	120 x 220 x 81 mm
14	BE-1229 AL	120 x 220 x 91 mm
15	BE-119 AL	160 x 160 x 90 mm
16	BE-1269 AL	160 x 260 x 90 mm
17	BE-221 AL	200 x 230 x 110 mm
18	BE-139 AL	160 x 360 x 90 mm
19	BE-232811 AL	230 x 280 x 110 mm
20	BE-23308 AL	230 x 330 x 180 mm
21	BE-233011 AL	230 x 330 x 110 mm
22	BE-181810 AL	180 x 180 x 100 mm
23	BE-258054 AL	250 x 80 x 54 mm
24	BE-201490 AL	200 x 140 x 90 mm
25	BE-281810 AL	280 x 180 100 mm
26	BE-232018 AL	230 x 200 x 180 mm
27	BE-403111 AL	400 x 310 x 110 mm
28	BE-403118 AL	400 x 310 x180 mm
29	BE-603111 AL	600 x 310 x 110 mm
30	BE-603118 AL	600 x 310 x 180 mm
31	BE-402311 AL	400 x 230 x 110 mm
32	BE-141490 AL	140 x 140 x 90 mm
33	Aluminium 1 Way Push Button Enclosure	
34	Aluminium 2 Way Push Button Enclosure	



GLASS REINFORCED POLYESTER (GRP) ENCLOSURES

Applications:

Our enclosures are suited for all areas requiring weatherproof enclosures Indoors Outdoors
Some area where these enclosures are ideally used are: Petrochemical Complex, CNC
Machines, Instrumentation, Push Button Stations, Relay Modules, Control Panels, Electrical
and Electronic Systems., Automation... the list is endless."

Technical Specifications:

INGRESS Protection	IP 66 TO EN 60529* 60079-0
Material:	Aluminium (Al Si 12) Rubber Seal: Foamed Neoprene Seal/ Silicon gaskit
Colour:	RAL 9011, BLACK, RAL 7000, GREY
Impact Resistance	>7 JOULES, IN ACC. WITH EN 60079-0
Flammability	VO /SELF-EXTINGUISHING, UL94
Temperature Range	(NEOPRENE SEAL) : - 40°C TO + 80°C (SILICONE SEAL) : -50°C TO + 100°C
Toxicity	FREE FROM HALOGEN



Sr.No	Item Code	Dimensions
1	BE - 807555 PS	80 x 75 x 55 mm
2	BE - 117555 PS	110 x 75 x 55 mm
3	BE - 121290 PS	122 x 120 x 90 mm
4	BE - 167555 PS	160 x 75 x 55 mm
5	BE - 167575 PS	160 x 75 x 75 mm
6	BE - 161690 PS	160 x 160 x 90 mm
7	BE - 197555 PS	190 x 75 x 55 mm
8	BE - 221290 PS	220 x 120 x 90 mm
9	BE - 252512 PS	255 x 250 x 120 mm
10	BE - 261690 PS	260 x 160 x 90 mm
11	BE - 361690 PS	360 x 160 x 90 mm
12	BE - 402512 PS	400 x 250 x 120 mm
13	BE - 404012 PS	400 x 405 x 120 mm



Cable Glands (Light Grey, Dark Grey, Black)

Cable Glands are available in PG & Matrix variations. Conforming to IP65 standards, Our Cable Glands will secure your wiring and reduce risks of cable breaks and wear outs. We supply wide range of sizes to suit all your applications

Technical Specifications:	
Protection Spec:	IP66 acc DIN EN 6052/DIN 40050
Material:	Nylon 6
Colour:	Light Grey (RAL 7035), Dark Grey & Black
Working Temperature:	-40° C to 100° C in static state; -20° C to 80° C in dynamic state.

Sr.No.	Model	Cable Diameter	HOLE Diameter
1	PG-7	3 - 6.5 mm	12.5 mm
2	PG-9	4 - 8 mm	15.2 mm
3	PG-11	5 - 10 mm	18.6 mm
4	PG-13.5	6 - 12 mm	20.4 mm
5	PG-16	10 - 14 mm	22.5 mm
6	PG-19	12 - 15 mm	24 mm
7	PG-21	13 - 18 mm	28.3 mm
8	PG-25	16 - 21 mm	30 mm
9	PG-29	18 - 25 mm	37 mm
10	PG-36	22 - 32 mm	47 mm
11	PG-42	28 - 38 mm	54 mm
12	PG-48	35 - 45 mm	59.3 mm
13	PG-63	42 - 50 mm	72 mm
14	M-12	3 - 6 mm	12 mm
15	M-16	5 - 10 mm	16 mm
16	M-20	8 - 13 mm	20 mm
17	M-25	11 - 17 mm	25 mm
18	M-32	15 - 21 mm	32 mm
19	M-40	19 - 28 mm	40 mm
20	M-50	25 - 35 mm	50 mm
21	M-63	35 - 45 mm	63 mm

Brass PG Cable Gland(IP68)

Brass PG Cable Gland(IP68)

Technical Specifications:	
Ingress protection:	IP68
Material:	Nickel Plated Brass
Colour:	Light Grey (RAL 7035), Dark Grey & Black
Working Temperature:	Operating Temp: -20°C to +100°C
Insert: Polyimide Nylon 6, Seals: Neoprene/ Nitrile, Thread: PG	

Sr.No.	Size	Threading Length	Clamping Range
1	PG- 07B	7	3-6
2	PG- 09B	8	4-8
3	PG-11B	8	5-10
4	PG- 13.5B	10	6-12
5	PG- 16B	10	10-14
6	PG- 21B	10	13-18
7	PG- 29B	10	18-25
8	PG- 36B	10	24-33.5
9	PG- 42B	12	30-37.5
10	PG- 48B	12	36-47



BLANKING PLUGS

Technical Specifications:

Protection Spec:	IP 68 - 5 Bar
Material:	PA-6 V2
Colour:	Light Grey (RAL 7035), Dark Grey & Black
Working Temperature:	L94 V2
Thread :	PG & Metrix

Sr.No.	Item Code	Description
	Metrix Blanking Plugs	Nylon Blanking Plugs
1	M-12	Nylon Blanking Plugs
2	M-16	Nylon Blanking Plugs
3	M-20	Nylon Blanking Plugs
4	M-25	Nylon Blanking Plugs
5	M-32	Nylon Blanking Plugs
6	M-40	Nylon Blanking Plugs
7	M50	Nylon Blanking Plugs
8	M-63	Nylon Blanking Plugs

PG Blanking Plugs

Sr.No.	Item Code	Description
1	PG-7	Nylon Blanking Plugs
2	PG-9	Nylon Blanking Plugs
3	PG-11	Nylon Blanking Plugs
4	PG-13.5	Nylon Blanking Plugs
5	PG-16	Nylon Blanking Plugs
6	PG-21	Nylon Blanking Plugs
7	PG-29	Nylon Blanking Plugs

Technical Specifications:

Ingress protection:	
Material:	
Colour:	
Working Temperature:	



Sr.No	Product
1	IP 68 T-Type Connector 5 Way
2	IP 68 Straight Connector 5 Way
3	IP 68 Connector 3-Way

Applications:

Our enclosures are suited for all areas requiring weatherproof enclosures Indoors Outdoors
Some area where these enclosures are ideally used are:Petrochemical Complex, CNC
Machines, Instrumentation, Push Button Stations, Relay Modules, Control Panels, Electrical
and Electronic Systems., Automation... the list is endless."

Technical Specifications:

Material:	Polymide PA-6 v2
Colour:	Black(RAL9005), Grey(RAL7031)
Flammability class :	UL94 V2
Temperature range :	-40.C + 12.C, short term 150.C
Tensile Strength :	750 N
Suspended Load Capacity :	150 N

Sr.No	Item Code	TL(mm)
1	PG-7C	6.4
2	PG-9C	11.5
3	PG-11C	12
4	PG-13.5	12
5	PG-16	13
6	PG-21	13
7	PG-29	15
8	PG-36	15
9	PG48	16



Conduit Pipe

Sr.No	Item Code	In Dia x Out Dia (mm)
1	PG-7P	6.5 x 10.0
2	PG-9P	10.0 x 13.0
3	PG-11P	12.0 x 15.8
4	PG-13.5P	14.3 x 18.5
5	PG-16P	17.0 x 21.2
6	PG-21P	23.0 x 28.5
7	PG-29P	29.0 x 34.5
8	PG-36P	36.0 x 42.5
9	PG-48P	48.0 x 54.5



Conduit Mounting and Bracket

Sr.No	Item Code	Standard
1	BPPCB7	Packing 100
2	BPPCB9	100
3	BPPCB11	100
4	BPPCB13.5	100
5	BPPCB16	100
6	BPPCB21	50
7	BPPCB29	50
8	BPPCB36	25
9	BPPCB48	10



CALL US NOW!

+91 8369202063

Releasable Wire Connectors, Lever Type

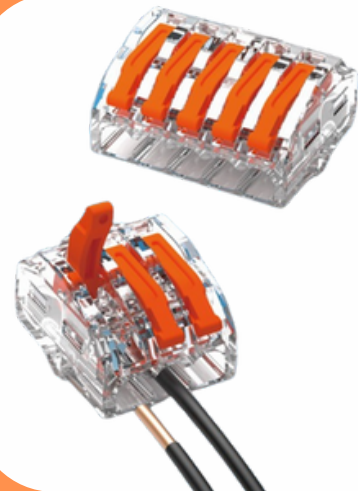
- Polycarbonate and Polyamide 66, UL 94V-O flame-retardant shell rated at T85 (IEC), 105° C /221° F (UL)
- Spring force connector constructed from tinned copper plate and stainless spring steel.
- Clear shell gives visual verification of connection.
- Accept solid and stranded conductor from 0.2mm²/28 AWG up to 4.0mm²/12 AWG.
- Open the clamping unit via the integrated lever, and insert conductors without using any tools.
- Rated to 600V max, for building wiring and 1000V max. in lighting fixtures/luminaires and signs.
- IEC/EN 60998 Certified and UL 486C Listed.



Sr.No	Picture	Size	Colour	Pole
1		PC622	Clear+ Orange	2
2		PC623	Clear + Orange	3
3		PC625	Clear +Orange	5

Terminal Blocks, PP & Steel Type

- Polypropylene, UL 94V-2 flame-retardant shell rated at T85 (IEC), 65° C /149° F (UL).
- Metal parts feature steel screws and zinc-plated steel contacts.
- Recessed screws and tubular contacts provide added safety and help prevent short circuits.
- U shaped contacts permit easy wire insertion.
- Easy cutting design makes it easier to be cut into desired number of poles.
- Pre-cutting is available upon request.
- Certified to IEC/EN 60998 and Recognized to UL 1059.



Sr.No.	Item Code	Dimension unit mm/in	A	B	C	D	E	F	Screw
1	PA20P	mm	96.2	17.00	14.50	8.20	3.10	2.90	M2 6x5
		in	3.787	0.67	0.57	0.32	0.12	0.11	
2	PA30P	mm	116.8	19.20	16.70	10.00	3.40	3.60	M 3x6
		in	4.598	0.76	0.67	0.36	0.13	0.14	
3	PA40P	mm	140.5	23.50	18.70	12.00	4.50	3.90	M3 5x7
		in	5.531	0.925	0.74	0.47	0.18	0.15	
4	PA50P	mm	169.8	25.00	20.80	14.50	6.50	4.30	M 4x9
		in	6.685	0.98	0.82	0.57	0.26	0.17	
5	PA60P	mm	194.4	36.00	26.10	16.50	7.00	4.20	M 5x11
		in	7.65	1.42	1.03	0.65	0.28	0.17	



Customization & Branding

At ANUPAM, we specialize in enclosure machining, customization, and branding services for businesses in your local area. Our team of experts provides customized solutions for industrial and commercial applications, offering precision machining services that meet your unique needs.

Whether you need customized cutouts, holes for leds, cables, buttons on enclosures or branding solutions for your enclosures, we have the expertise to help you stand out from the competition. Contact us today to learn more about our services and how we can help you achieve your goals.



	Service
Custom enclosure fabrication	Custom enclosure fabrication services for industrial and commercial applications.
Precision machining services	High-precision machining services for metal enclosures.
Metal enclosure customization	Customized metal enclosure solutions for your specific needs.
Branding and labeling services	Professional branding and labeling services for enclosures.
Industrial enclosure modification	Expert industrial enclosure modification services for businesses.
Electronic enclosure manufacturing	Custom electronic enclosure manufacturing for a variety of applications.
Custom enclosure design services	Custom enclosure design services for businesses of all sizes.
Powder coating for enclosures	Powder coating services to enhance the durability and appearance of your enclosures.
CNC machining	High-quality CNC machining services for all types of enclosures.
Enclosure painting services	Expert enclosure painting services to enhance the appearance of your products.
Graphic overlay design and printing	Graphic overlay design and printing services to customize your enclosures.
Prototyping for enclosure development	Prototyping services to help you develop the perfect enclosure for your needs.
Enclosure assembly services	Professional enclosure assembly services for efficient production.



Our Goal

Client satisfaction is our primary goal and since our inception we have maintained affable business relations with reputed companies in India. We have with us state of the art infrastructure that is equipped with hi-tech machineries to produce quality range of plastic enclosure, industrial enclosure, ABS enclosure, aluminium enclosures and cable gland. On understanding the specifications of our clients, we bring changes in the products. Well-defined parameters on the basis of which we customize the products are Size, Length, Width and Height.

Further, our team of diligent quality inspectors is engaged in checking our enclosures from its start to its perfect packing so that we can offer flawless products. With a comprehensive range of items, premium quality and timely deliveries we have earn accolades from our customers.

Key People



V R MODANI
Chairman / MD



ShreeNarayan
CEO



Thank You

For Contacting us with gratitude

Visit Us

www.anupamgroups.com

